

## Polyclonal Antibody to Glypican-4 / GPC4 (Internal) - Aff - Purified

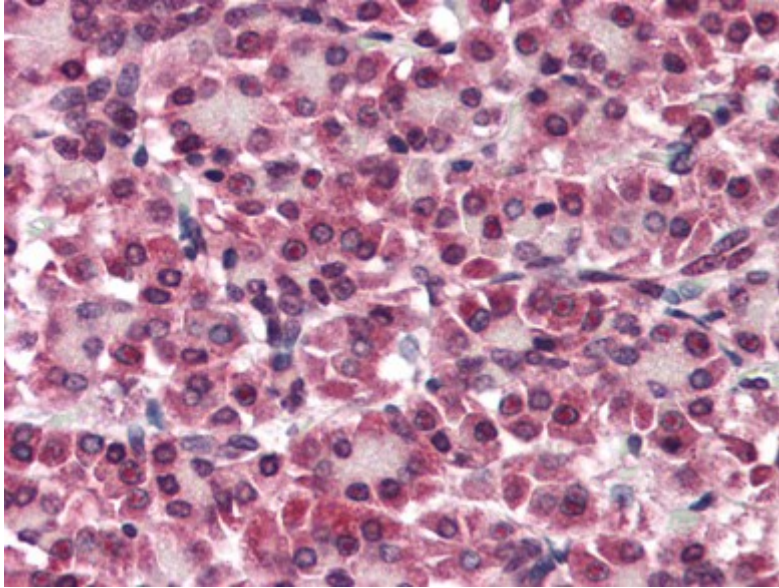
<b>Alternate names:</b>	K-Glypican
<b>Catalog No.:</b>	AP09055PU-N
<b>Quantity:</b>	50 µg
<b>Uniprot ID:</b>	<a href="#">O75487</a>
<b>Host / Isotype:</b>	Rabbit / IgG
<b>Immunogen:</b>	Internal domain of human GPC4
<b>Format:</b>	<b>State:</b> Liquid purified Ig <b>Purification:</b> Immunoaffinity Chromatography <b>Buffer System:</b> PBS containing 0.09% sodium azide
<b>Applications:</b>	Immunohistochemistry on paraffin sections: 5 - 10 µg/ml. Other applications not tested. Optimal dilutions are dependent on conditions and should be determined by the user.
<b>Specificity:</b>	This antibody reacts to Glypican 4 (GPC4). <b>Species:</b> Human. Others not tested.
<b>Storage:</b>	Store the antibody undiluted at 2-8°C for one month or (in aliquots) at -70°C for longer. Avoid repeated freezing and thawing. Shelf life: one year from despatch.

**For research and in vitro use only. Not for diagnostic or therapeutic work.**

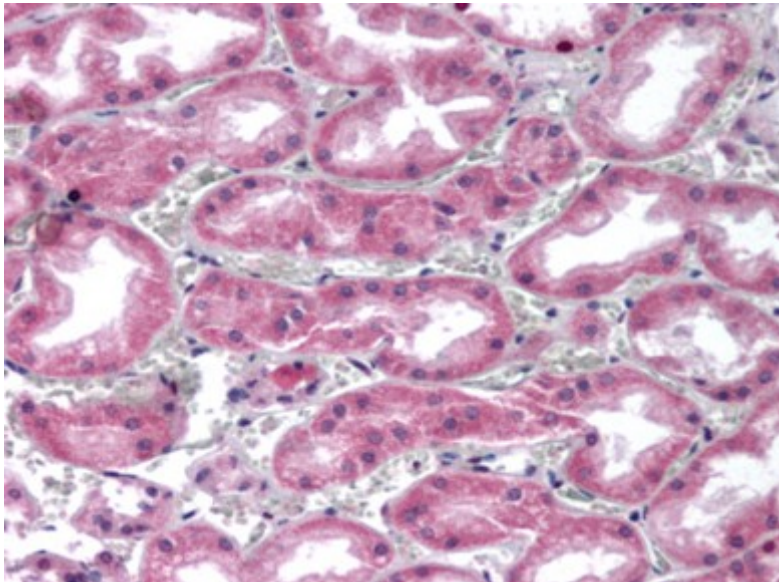
Material Safety Datasheets are available at [www.acris-antibodies.com](http://www.acris-antibodies.com) or on request.

Antibody Hotline - Technical Questions - Antibody Location Service  
Free Call: 0800-2274746 (Germany only) - [www.acris-antibodies.com](http://www.acris-antibodies.com)

Pictures:



Pancreas: Formalin-Fixed Paraffin-Embedded (FFPE)



Kidney: Formalin-Fixed Paraffin-Embedded (FFPE)

---

**For research and in vitro use only. Not for diagnostic or therapeutic work.**

Material Safety Datasheets are available at [www.acris-antibodies.com](http://www.acris-antibodies.com) or on request.

Antibody Hotline - Technical Questions - Antibody Location Service  
Free Call: 0800-2274746 (Germany only) - [www.acris-antibodies.com](http://www.acris-antibodies.com)