

# E2F7 Antibody

**Orders** ■ +34 902 220 246  
info@antibodybcn.com

**Web** ■ www.antibodybcn.com

**Catalog#:** BCN 4776

**Lot#:**

rev. 13/11/08

## Immunogen Data

**Description:** Belongs to the E2F/DP family and inhibits the E2F-dependent transcription. Binds DNA independently of DP proteins through the E2F recognition site, 5'-TTTC[CG]CGC-3'. Appears to regulate a subset of E2F-dependent genes whose products are required for normal cell cycle progression. Modulates the activity of other E2F proteins, such as E2F1, probably by competing or displacing activating E2Fs from binding to its promoter. E2F7 acts upstream of E2F1, limiting its expression, and thus influencing the ability of cells to undergo a DNA-damage response and apoptosis. This role is critical for mouse development.

**Immunogen:** KLH-conjugated synthetic peptide common to isoforms 1 and 2 of E2F7.

**Alternative names:** E2F7 isoform 1 and E2F7 isoform 2 or E2F7-B and E2F7-A, respectively.

**UniProt ID:** Q96AV8-1 and Q96AV8-2.

**Mol. Weight:** 99.8 kDa and 88.8 kDa respectively.

## Antibody Data

**Host:** Rabbit

**Clonality:** Polyclonal

**Species Reactivity:** Human. Its reactivity against other species has not been determined.

**Concentration:**                      **Volume:**

**Purity:** Rude polyclonal rabbit serum

**Storage Buffer:**

**Storage Instruction:** Aliquot and store at -20°C or -80°C. Avoid freeze-thaw cycles.

## Applications

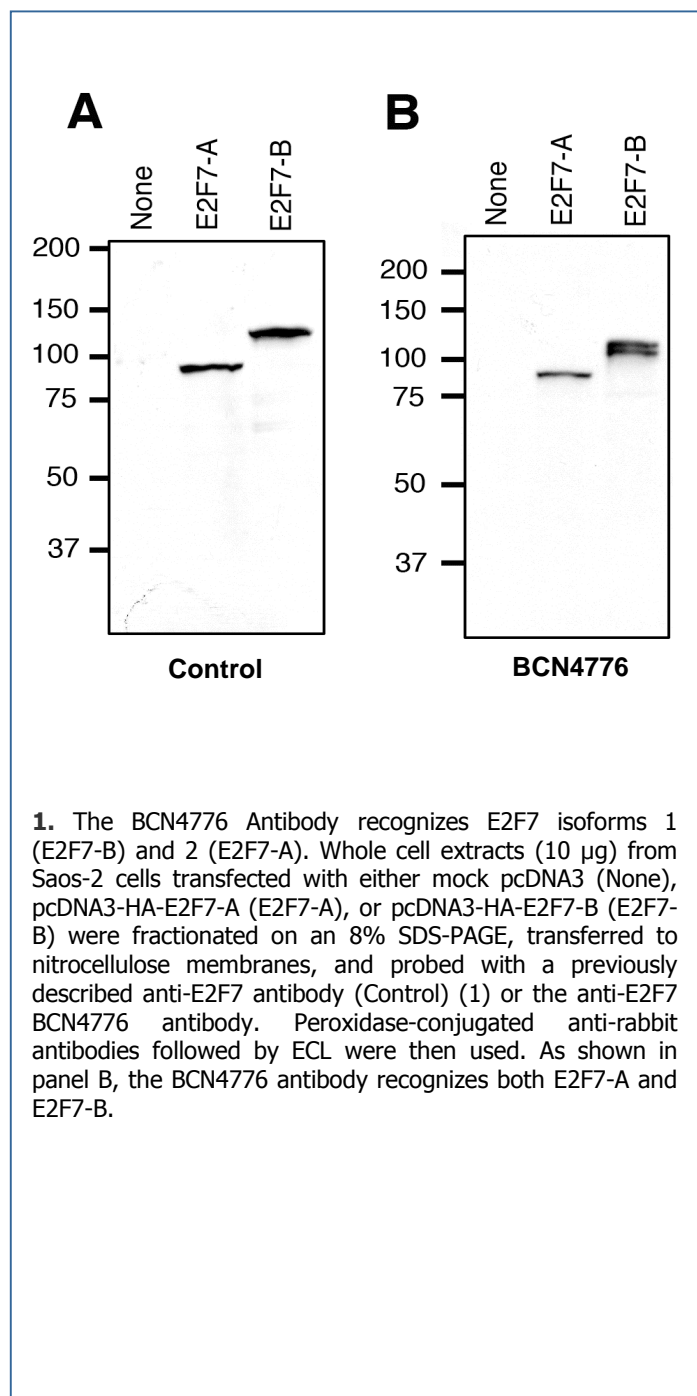
**Tested Applications:** WB, IP and EMSA. The usefulness of this product in other applications has not been determined.

**Recommended Dilutions:**

**WB:** 1:5000

**EMSA:** 2 µl of undiluted pab

**IP:** 2 µl of undiluted pab



**FOR RESEARCH PURPOSE ONLY (RUO)  
NOT FOR DIAGNOSTIC OR THERAPEUTIC USE**

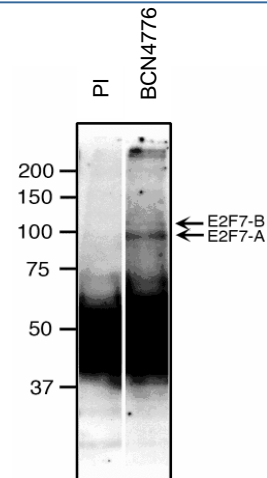
Catalog#: BCN 4776

## Background References:

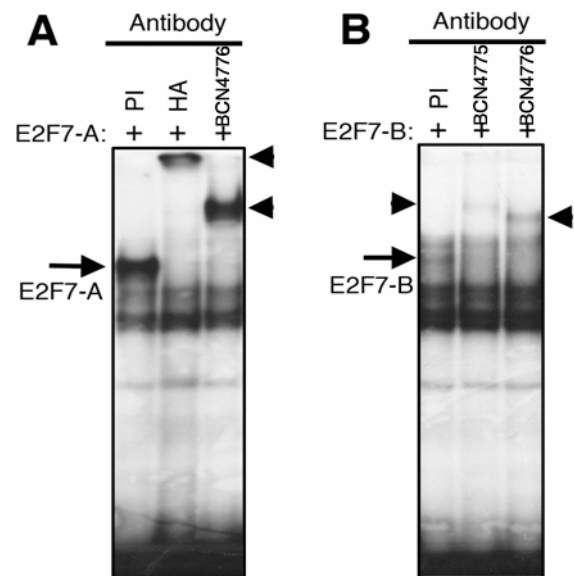
- (1) Di Stefano, L. et al. (2003) *EMBO J.* 22:6289-6298 [PMID: 14633988]
- (2) Logan, N. et al. (2004) *Oncogene.* 23:5138-5150 [PMID: 15133492]
- (3) Zalmas, L.P. et al. (2008) *EMBO Rep.* 9:252-259 [PMID: 18202719]
- (4) Jing, L. et al. (2008) *Dev. Cell.* 14:62-75 [PMID: 18194653]

## Applicated References:

- Alvaro-Blanco, J. et al. (2009) *Carcinogenesis.* Jan 6 [Epub ahead of print]



**2. The BCN4776 Antibody immunoprecipitates endogenous E2F7-A and E2F7-B.** 500 µg of whole cell extracts from K562 cells were immunoprecipitated with 2 µl of the BCN4776 crude rabbit serum or the corresponding pre-immune serum (PI). Immunoprecipitated proteins were fractionated on 8% SDS-PAGE and transferred to nitrocellulose membranes. The membranes were then probed with a previously described anti-E2F7 antibody (1). Peroxidase-conjugated anti-rabbit antibodies followed by ECL were then used. The arrows point to immunoprecipitated E2F7-A and E2F7-B.



**3. The anti-E2F7 BCN4776 antibody is able to supershift DNA-protein complexes that contain either E2F7-A or E2F7-B.** Complex formation employing a radiolabeled E2F element from the human DHFR promoter and nuclear extracts from Saos-2 cells transfected with either pcDNA3-HA-E2F7-A (A) or pcDNA3-HA-E2F7-B (B) were analyzed by EMSA. Extracts were preincubated in the presence of an antibody to the HA tag, the anti-E2F7-B (BCN4775), the anti-E2F7 BCN4776 antibody, or the corresponding pre-immune serum (PI). The arrow indicates the position of the HA-E2F7-A- or HA-E2F7-B-containing complexes, whereas arrowheads indicate the position of super-shifted complexes.