

## Polyclonal Antibody to CGRP / CALCA - Ig Fraction

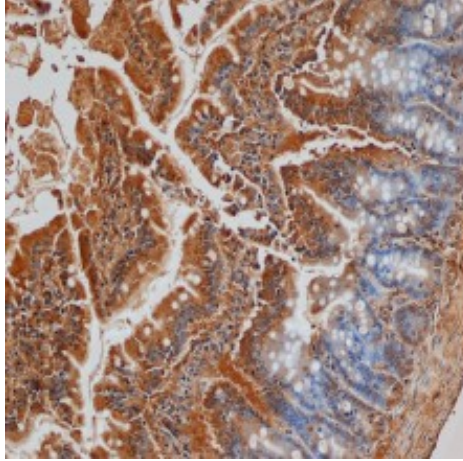
<b>Alternate names:</b>	Calcitonin gene-related peptide I, Alpha-type CGRP, CALC1, CGRP-I
<b>Catalog No.:</b>	BP022
<b>Quantity:</b>	0.1 ml
<b>Concentration:</b>	5.0 mg/ml
<b>Background:</b>	CGRP is present in C-cells of the thyroid and in central and peripheral nerves. CGRP has several important physiologic roles: it is a potent vasodilator, and can affect the force and rate of heart beat; it can modulate acetylcholine receptor function at the neuromuscular junction; it has been demonstrated to block tolerance to morphine; and it can modulate antigen presentation in Langerhans cells in the skin. Despite these important physiologic functions, therapeutic strategies using CGRP have been impeded due to the lack of a cloned CGRP receptor with which ligands could be developed.
<b>Uniprot ID:</b>	<a href="#">P01256</a>
<b>Host / Isotype:</b>	Goat
<b>Immunogen:</b>	Synthetic rat Tyr-CGRP (23-37) conjugated to gamma globulin
<b>Format:</b>	<b>State:</b> Liquid purified IgG fraction <b>Purification:</b> Protein G affinity chromatography <b>Buffer System:</b> PBS containing 0.09% sodium azide as preservative
<b>Applications:</b>	ELISA (1/500-1/2500). Immunohistochemistry. Other applications not tested. Optimal dilutions are dependent on conditions and should be determined by the user.
<b>Specificity:</b>	Antibody is reactive with whole molecule (1-37) and 23-37 fragment (C- term). Specifically visualises CGRP in brain cells. <b>Species:</b> Rat, Mouse and Reptiles. Others not tested.
<b>Add. Information:</b>	The antibody has been described to work with reptilian material.
<b>Storage:</b>	Store the antibody undiluted at 2-8°C for one month or (in aliquots) at -20°C for longer. Avoid repeated freezing and thawing. Shelf life: one year from despatch.
<b>General References:</b>	1. Collins, J.J. et al (2000) Distribution and origin of secretoneurin-immunoreactive nerves in the female rat uterus <i>Neuroscience</i> 95: 255-264. 2. Pritz. M.B. and Stritzel, M.E. (1988) Thalamic nuclei that project to reptilian telencephalon lack GABA and GAD immunoreactive neurons and puncta <i>Brain Res.</i> 457: 154-159. 3. Pritz. M.B. and Stritzel, M.E. (1989) Reptilian dorsal column nucleus lacks GAD immunoreactive neurons. <i>Brain Res.</i> 503: 175-179.

**For research and in vitro use only. Not for diagnostic or therapeutic work.**

Material Safety Datasheets are available at [www.acris-antibodies.com](http://www.acris-antibodies.com) or on request.

Antibody Hotline - Technical Questions - Antibody Location Service  
 Free Call: 0800-2274746 (Germany only) - [www.acris-antibodies.com](http://www.acris-antibodies.com)

Pictures:



**Figure 1.** Paraffin embedded rat intestine stained with goat anti Rat CGRP antibody BP022.

---

**For research and in vitro use only. Not for diagnostic or therapeutic work.**

Material Safety Datasheets are available at [www.acris-antibodies.com](http://www.acris-antibodies.com) or on request.

Antibody Hotline - Technical Questions - Antibody Location Service  
Free Call: 0800-2274746 (Germany only) - [www.acris-antibodies.com](http://www.acris-antibodies.com)