

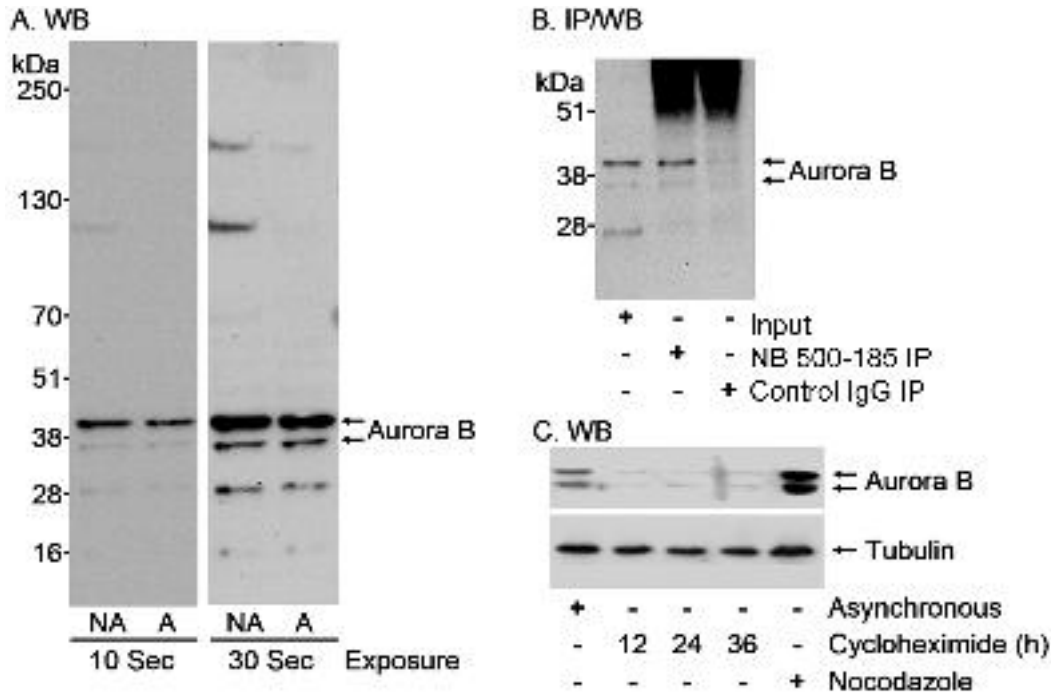
Aurora B antibody

Rabbit polyclonal antibody to Aurora B

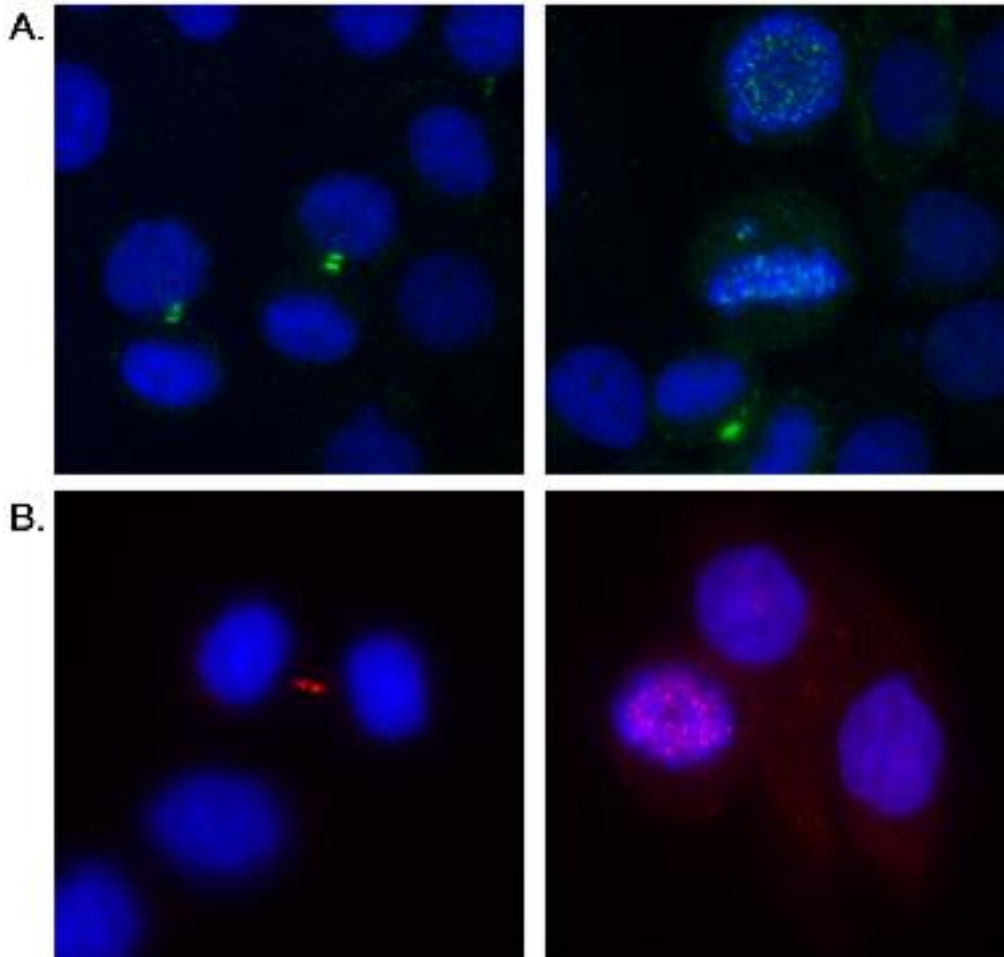
Catalog Number **NB 500-185**

- Alternate Names:** AurB antibody, Aur-B antibody, Aurora kinase B antibody, AIK2 antibody, Aurora/IPL1-like kinase 2 antibody, ARK2 antibody, Aurora related kinase 2 antibody, STK12 antibody, Serine/threonine kinase 12 antibody
- Specificity:** NB 500-185 is specific for human Aurora B protein.
- Immunogen:** A synthetic peptide, mapping to a region region between residue 300 and the C-terminus (residue 344) of human Aurora B kinase using the numbering given in Swiss-Prot entry Q96GD4 (GeneID 9212).
- Host:** Rabbit
- Species Reactivity:** Human. Other species have not been tested. Reactivity with mouse Aurora B is unlikely owing to divergence of sequence between this ortholog and human Aurora B at the site to which the epitope maps.
- Uses and Dilutions:** NB 500-185 may be used for Western blot, immunofluorescence, and immunoprecipitation.
- Suggested working dilutions: *
- Western Blot: 1:5,000 – 1:15,000
- Immunoprecipitation: 1 to 4 ug/mg lysate
- Immunofluorescence: 0.5 to 2 ug/ml
- *The investigator should determine the optimal working dilution for a specific application.
- Form:** 0.1 ml of peptide affinity purified rabbit sera in a Tris-citrate/phosphate (pH 7-8) buffer containing 0.1% sodium azide.
- Concentration:** 1 mg/ml
- Storage:** Store at 4 degrees Celcius. Avoid repeated freeze-thaw cycles.
- Limitations:** This product is for research use only and is not approved for use in humans or in clinical diagnosis.
- Notes:** Blocking peptide is available or can be made for this item. Lead time is 3 days to 4 weeks. Price is \$150/0.25 ml (or 50 ug). Please enquire availability.

Image(s)



Detection of Human Aurora B by Western Blot and Immunoprecipitation. Samples: A) Whole cell lysate (50 ug) from adherent (A) and non-adherent (NA) HeLa cells that were treated (20h) with nocodazole. B) Whole cell lysate (50 ug for Input; 1 mg for IP) from nocodazole treated HeLa cells. C) Whole cell lysate (100 ug/lane) from HeLa cells that were untreated or treated with cycloheximide or nocodazole. Antibody: NB 500-185 used at 0.1 ug/ml for WB and at 0.4 ug/mg lysate for IP. Immunoprecipitation was also performed using normal rabbit IgG (Control IgG) as negative control. Detection: Chemiluminescence with exposure times of 10 (A), 30 (A) or 60 (B & C) seconds.



Detection of human Aurora B by immunofluorescence. Sample: Asynchronous HeLa cells. Antibody: NB 500-185 used at 0.5 ug/ml in A and at 2 ug/ml in B. Detection: Anti-rabbit IgG conjugated to FITC in A and Texas Red in B.